



100%
LeakProof

Sealless Magnetic Drive Pumps
Non-Metallic Series PMD



TROUBLE FREE PUMPS
SINCE 2001



QUALITY POLICY

We strongly believe and are committed to design and manufacture of quality pumps at a competitive price. We will always make our best to supply pumps with full customer satisfaction and trouble-free operation.

COMPANY PROFILE

India's Top **Magnetic Pump Manufacturer**

Establishing a strong company requires expertise and knowledge of product, ability to gather resources and great determination and confidence in future. From a modest beginning of manufacturing magnetic drive pumps in 2001, today company has become a leading pump manufacturer in India with its two state of art manufacturing facility in Wadhwan Gujarat.

Taha An **ISO 9001:2015** is a leading company dedicated to Design, Manufacture, Sales & Service of Pumping technology in India. Taha develops and manufactures pumps that guarantee the highest level of reliability, flexibility and efficiency.

Over the years, Taha has created its own range of pumps, for acids, solvents and chemical usages, that are technologically advance and highly resistant to aggressive chemicals.

- Two modern manufacturing facility with modern machining testing and quality equipment's.
- Qualified and trained staff of engineers, supervisors and operators.
- In house R&D facility to design and develop special pumps as per requirement.
- Well connected to all over India by road rail and air.
- Very good dealer network pan India with sufficient stock and trained servicemen.
- Associated with plenty of leading companies in India for supply of quality pumps and exporting to more than 20 countries.

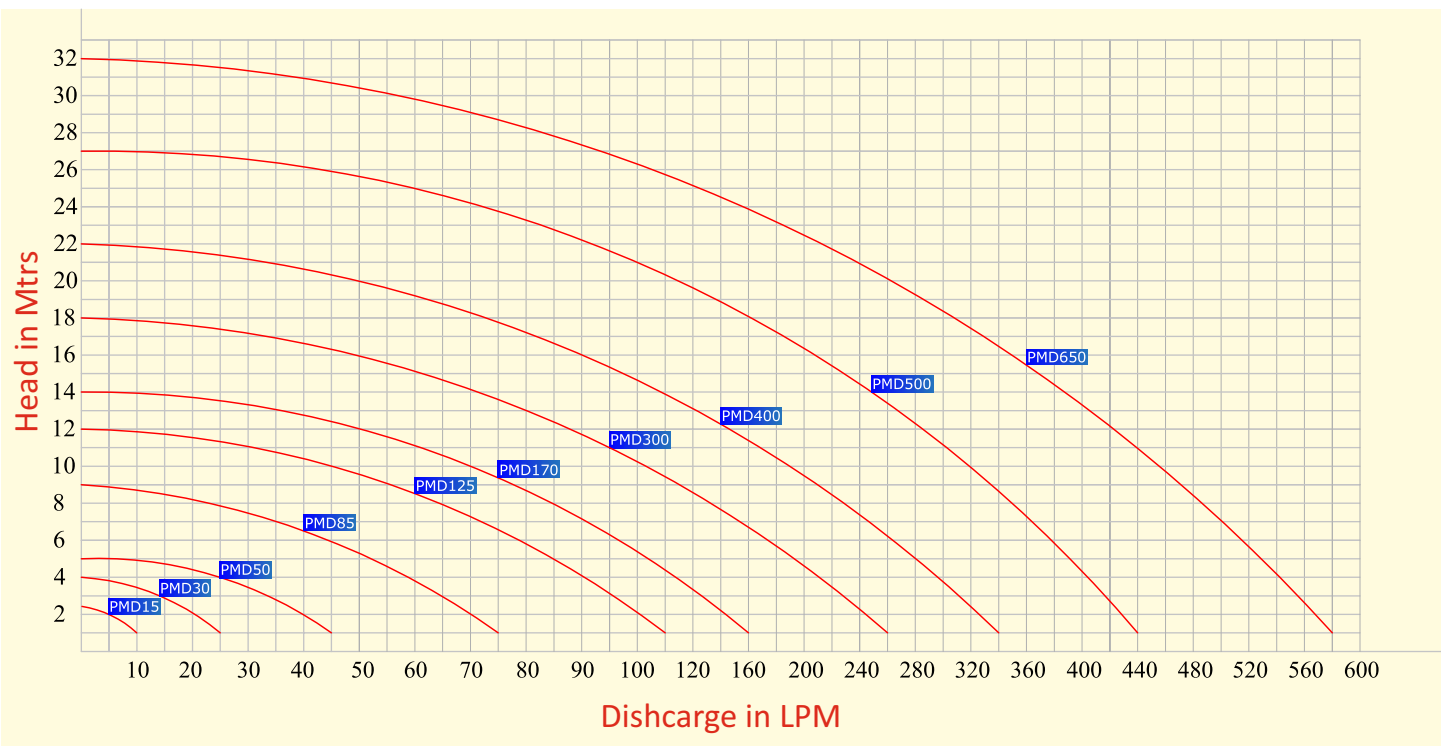


MAGNETIC DRIVE TECHNOLOGY

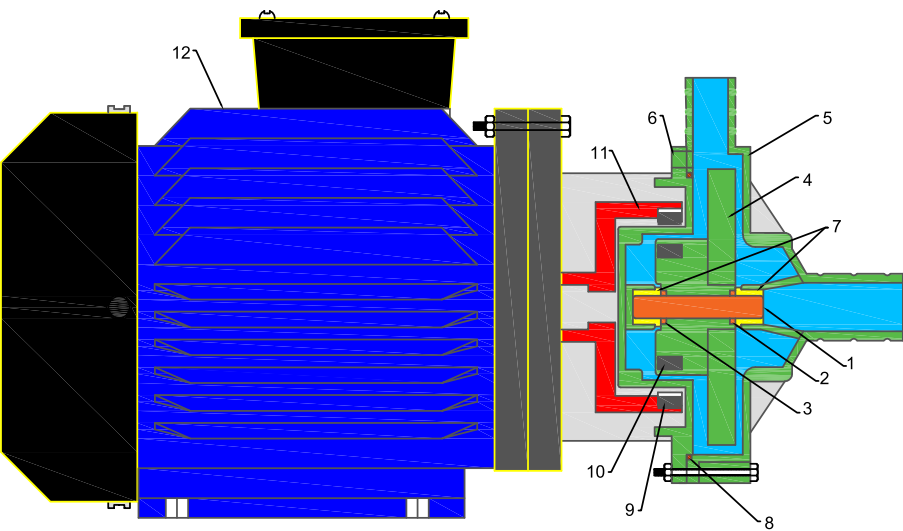
In a seal-less magnetic drive centrifugal pump, the external magnet connected directly to the motor shaft and it transmits the torque to the internal magnet. The magnetic field created produces a rotation without physical contact between the parts so the impeller spins and moves the fluid. the rear casing is placed between the two magnet joints and it hermetically closes the hydraulic part from the motor.

MAGNETIC PUMP MODELS									
PUMP DATA							ELECTRIC MOTOR DATA		
MODEL	HOSE CONNECTION	THREAD CONNECTION	FLOW LPM	FLOW LPH	HEAD METERS	HP	WATTS	PHASE	AMPS
PMD 15	14 X 14 mm	-----	15	900	2.5	0.1	75	SINGLE THREE	0.4
PMD 30	18 x 18 mm	-----	30	1800	4	0.16	120	SINGLE THREE	0.64 0.32
PMD 50	20 x 20 mm	1/2" x 1/2" BSP	50	3000	45	0.25	186	SINGLE THREE	1 0.32
PMD 85	26 x 26 mm	1" x 1" BSP	85	5100	9	0.5	370	SINGLE THREE	3 1
PMD 125	26 x 26 mm	1" x 1" BSP	125	7500	12	0.75	530	SINGLE THREE	4 13
PMD 170	-----	1" x 1" BSP	170	10200	14	1	745	SINGLE THREE	5 1.8
PMD 300	-----	1 1/2"x1 1/2" FLANGE	270	16200	18	1.5	1100	SINGLE THREE	8 2.4
PMD 400	-----	1 1/2"x1 1/2" FLANGE	350	21000	21	2	1500	SINGLE THREE	10 3.1
PMD 500	-----	2" x 1 1/2" FLANGE	450	27000	27	3	2230	THREE	4.6
PMD 650	-----	2" x 1 1/2" FLANGE	600	36000	32	5	3720	THREE	7.3

PERFORMANCE CURVE 50H2 / 230-415V AC/ WATER



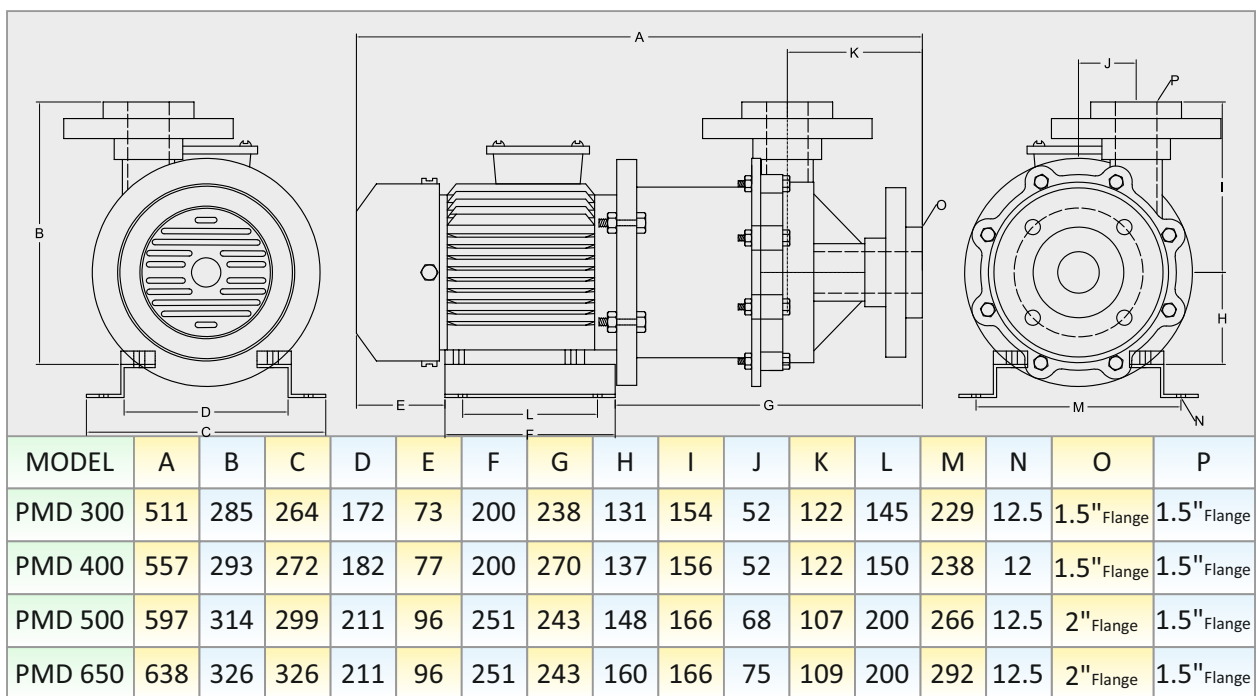
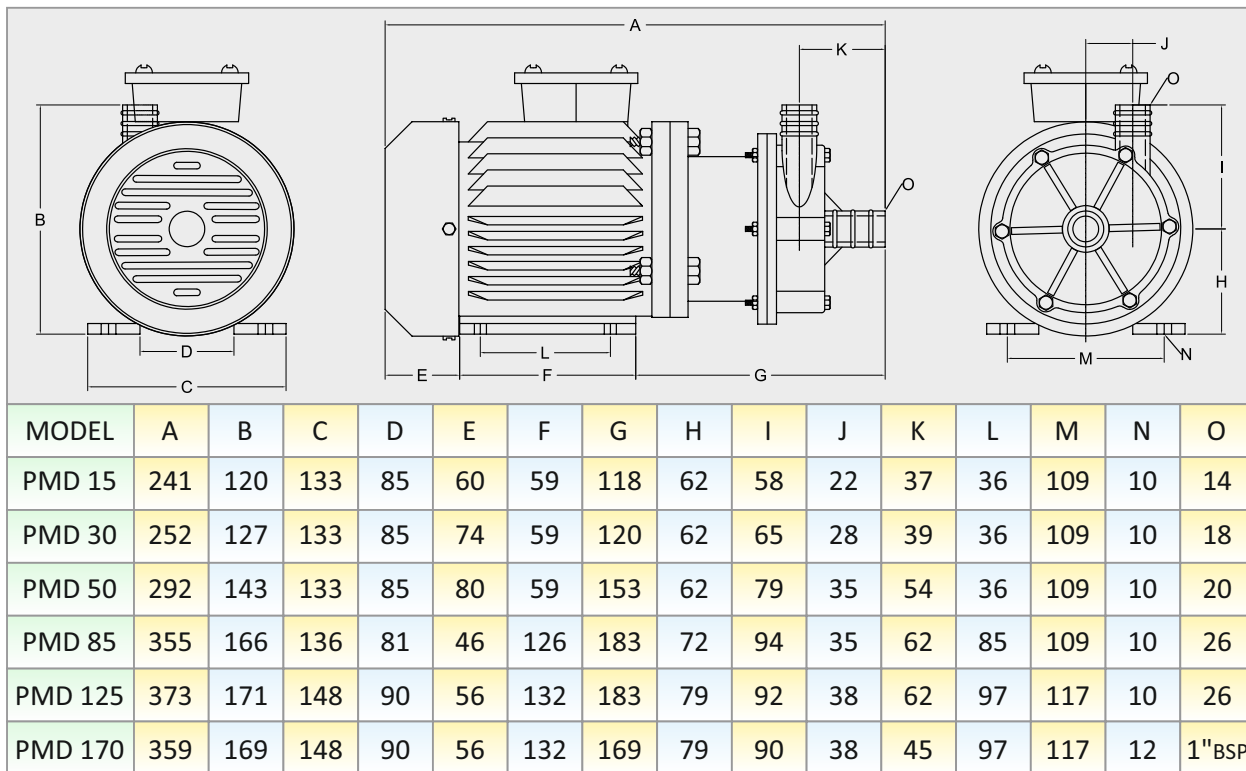
MATERIAL OF CONSTRUCTION



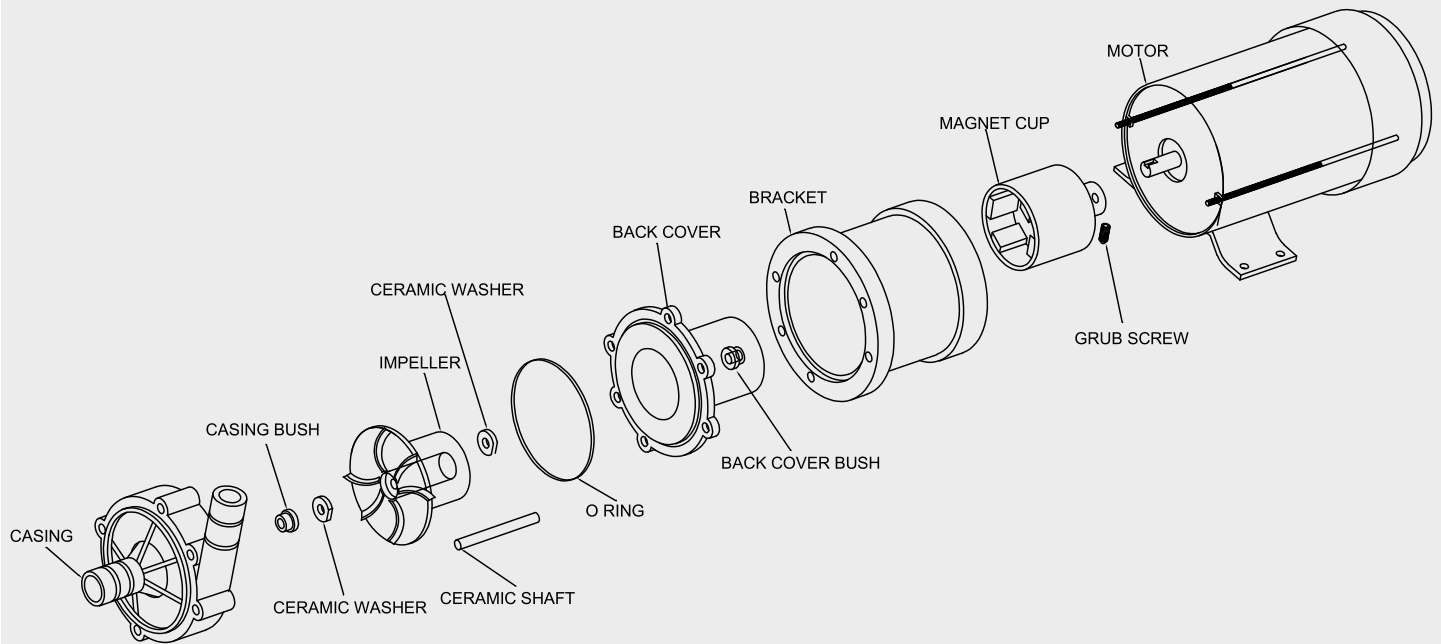
PUMP PARTS MATERIAL OF CONSTRUCTION		
1	SHAFT	ALUMINA CERAMIC
2	FRONT WASHER	
3	REAR WASHER	
4	IMPELLER	GLASS FILLED POLY PROPYLENE
5	FRONT CASING	
6	REAR CASING	
7	CASING BUSH	GF TEFLON
8	O RING	VITON
9	DRIVER MAGNET	NDFED
10	DRIVEN MAGNET	
11	DRIVE MAGNET CUP	CAST IRON
12	MOTOR	CI / ALUMINUM



PUMP DIMENSIONS

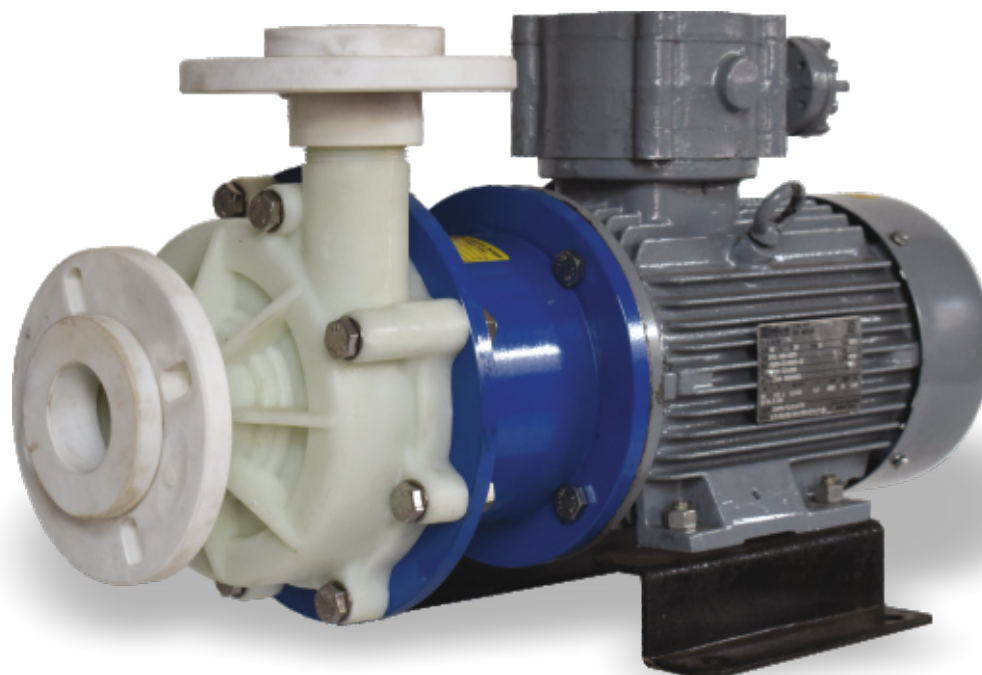
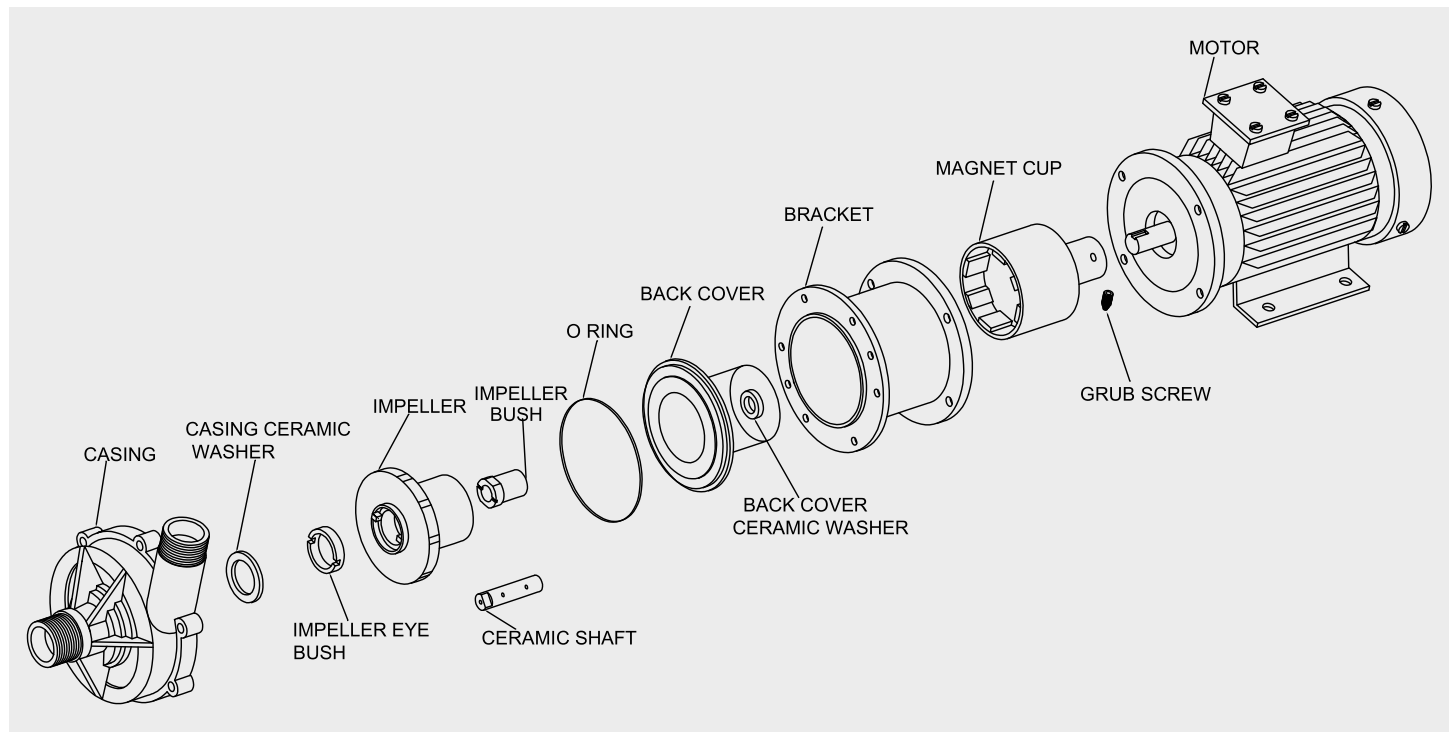


Model : PMD15 / 30 / 50 / 85 / 125 / 170





Model : PMD 300 / 400 / 500 / 650



- Chemical Industries
- Electroplating Industries
- Etching Machines
- Dairy Boilers
- Medical Equipments
- Metal Working Machines
- X-Ray Film Plants
- Pharmaceutical Industries
- Metal Finishing Equipments
- Galvanizing Plating
- Air Condition Units
- Beverages Industries
- Photoengraving Process
- Liquid Circulation
- Textile Processing & Dying
- Food Processing Industries
- Anodizing Plating
- Silver Recovery System
- Coolant Pumping
- PCB Plants
- Descaling
- Laboratory Equipments
- Filtration Units
- Agitation Descaling
- Heat Exchangers
- Machine Tools
- Acid Handling
- Solar Heating System

100%
LeakProof



Complete Range of Chemical Process Pumps,
Seal-Less Magnetic Drive pumps &
Mono Block Pumps in PP, PVDF & SS-316

Taha Industries

📍 Plot No. 4, Opp. Parmar Polymer,
Bh. Marketing Yard,
G.I.D.C. Wadhwan-363 035,
Dist. Surendranagar, (Gujarat), INDIA.

📞 Mob. : [REDACTED] 98258 29875

✉ [REDACTED] tahaindustries52@gmail.com

🌐 [REDACTED] www.tahaindustries.com



circle graphic - 9033440033